

Magnetic Field Measurement System / 7904A-001

Human Exposure Measurement for max. 5 seats simultaneous is possible

Using Narda's "ELT-400 Low Frequency Magnetic Field Exposure Level Tester", it is possible to measure electromagnetic field of vehicles with regarding to the human exposure based on a technical paper "JASO TP-13002" (JASO: "Society of Automotive Engineers of Japan").

Measurement of max. 5 seats (total 15 points) simultaneous is possible.

Troublesome setting or operation are not required, so that, human exposure measurement becomes easy.

Measurement data is recorded to internal SSD. Analyzing and evaluating the data and making a report are easily possible by the equipped special software.

Seat of automobile

ELT-400

Data Processor Unit : 7904A-001

Measurement

Under Measurement

Vehicle Inside

Front Right B

Exposure Level (%)

Time(sec)

Measurement Display

Setting of Multiple ELT-400 at once is possible.

By connecting with external monitor (option), operating and monitoring of measurement status from a driver seat is possible.

Measurement

Stop 00:00:00

Vehicle Inside

Front Right [Slot1]

Exposure Max. 0.00%

Rear Right [Slot4]

Exposure Max. 0.00%

Measurement

Stop 00:00:00

Vehicle Outside

Slot1

Exposure Max. 0.00%

Slot2

Exposure Max. 0.00%

Slot3

Exposure Max. 0.00%

Slot4

Exposure Max. 0.00%

Slot5

Exposure Max. 0.00%

Measurement

Stop 00:00:00

Vehicle Outside

Right [Slot1]

Exposure Max. 0.00%

Front [Slot2]

Exposure Max. 0.00%

Left [Slot3]

Exposure Max. 0.00%

ELT-400 Setting

SLOT1

H ICNIRP1998 Gen. Low

C ICNIRP1998 Gen. High

B ICNIRP1998 Gen. Low

SLOT3

H ICNIRP1998 Gen. Low

C ICNIRP1998 Gen. Low

B ICNIRP1998 Gen. Low

SLOT4

H ICNIRP1998 Gen. Low

C ICNIRP1998 Gen. Low

B ICNIRP1998 Gen. Low

SLOT2

H ICNIRP1998 Gen. Low

C ICNIRP1998 Gen. Low

B ICNIRP1998 Gen. Low

SLOT5

H ICNIRP1998 Gen. Low

C ICNIRP1998 Gen. Low

B ICNIRP1998 Gen. Low

Key Lock

On Off

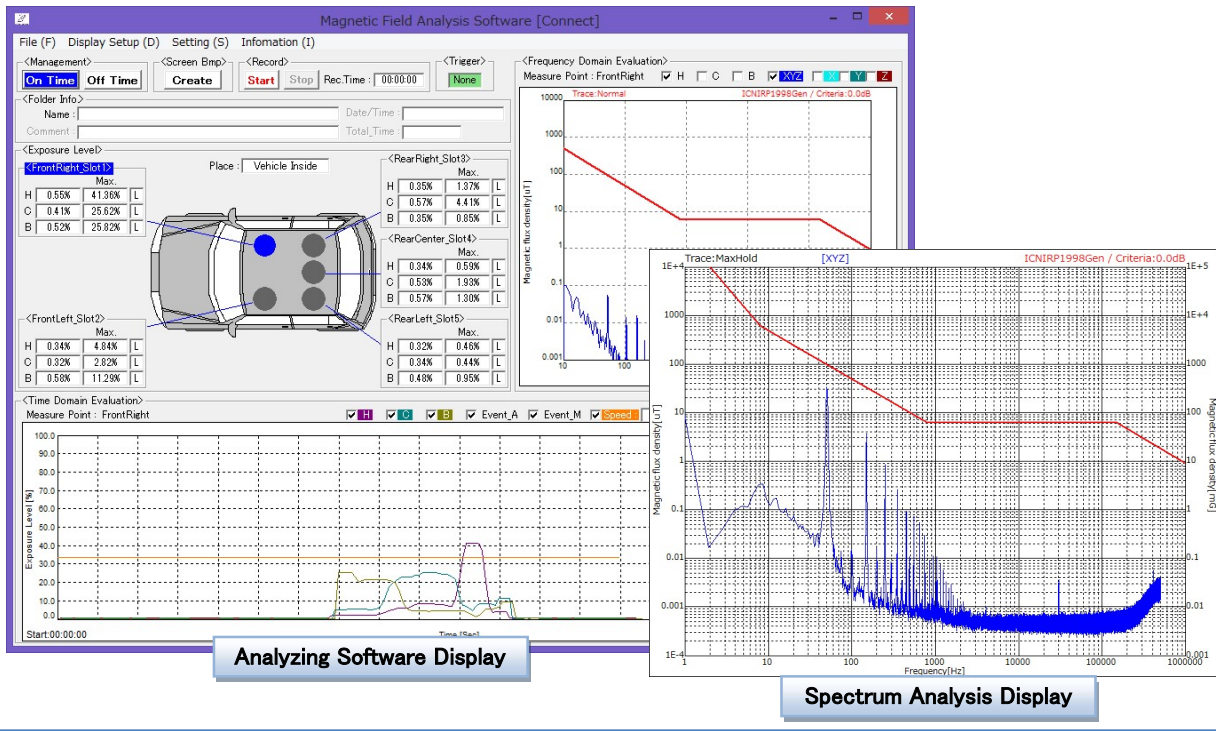
Ok Cancel

Numeric Value Display

ELT-400 Setting Display

Equipped Special Analyzing Software

Analyzing and evaluating the data and making a report are easily possible.



Spec.

Frequency Range	10Hz~400kHz
ICNIRP Forward Transfer Function Frequency Response	within $\pm 1.0\text{dB}$ ($f < 1\text{kHz}$) within $\pm 0.5\text{dB}$ ($f \geq 1\text{kHz}$) (Inverse Transfer Function Response supplied by Narda is Standard.)
S/N	within -1.0dB (for standard value of ELT-400) (10Hz and 100% is standard)
Number of channels (ELT-400)	15
Power Supply	+10V ~ +16V
Internal Storage	SSD (Solid State Drive) 512GByte
Dimensions	380mm(W) × 193mm(H) × 506mm(D) (excluding projection)
Option	
Seat Jig	Jig to fix ELT-400 to the seat
Remote Controller Box	Operation of start/stop recording is possible.
External Monitor	For operating and monitoring from a driver seat.